

Student Debt Letter Correspondence

Help students improve enrollment and college financing decisions

College Cost Meter® makes it easy for schools to present the financial aid and student loan information students need to achieve better outcomes and **comply with state requirements** for sending student indebtedness data. School branding, no login barrier and private loan details are just a few of the reasons why using College Cost Meter alongside the Annual Student Loan Acknowledgement tool provides the most comprehensive information for student success.

Customization

Your goals aren't the same as the school across town or across the country. This versatile solution lets you customize content and data, and link to helpful resources.

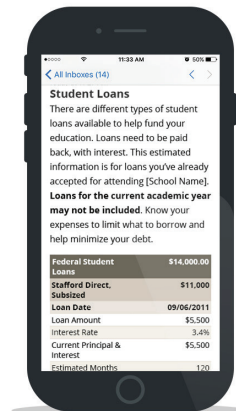
Dynamic data

A school-generated file and NSLDS data is collected to provide your students with the personalized financial aid details you want them to know.

Clear information

Introduce your desired data to students in an easy-to-understand, responsive format.

- Calculates and clearly presents student loan interest rate, repayment terms, estimated payment, and total loan cost
- Gently encourages students to consider their total indebtedness and reduce borrowing
- Offers percent of borrowing limit to keep students aware and informed



Compliance

Helps schools meet state-specific student debt letter legislation requirements.

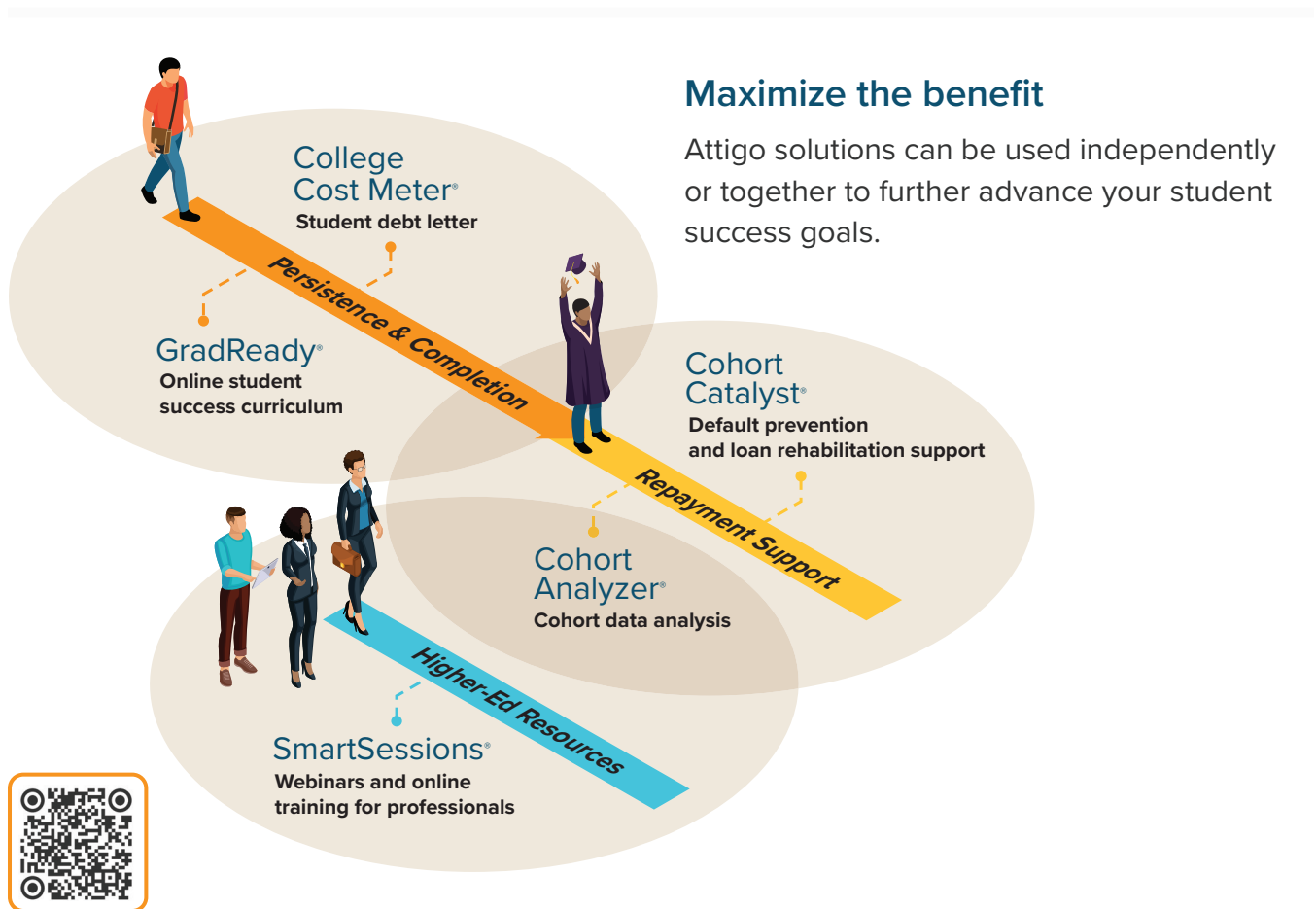
- Audit reports list the students who were sent correspondence
- Search for exact copies of a student's communication to support compliance or student counseling
- A PDF or HTML file provides copies of all correspondence sent
- Student data protected in accordance with FERPA; ADA compliant communications

Affordable and easy to implement

Creating an indebtedness letter takes time and resources. Use your people and money to solve bigger challenges. A **\$1,000 annual subscription fee** covers use of the solution, unlimited email sends, and a 24/7 accessible dashboard with reporting.

Convenient

There's no installation required. We provide high-touch onboarding support. Our representatives will work with you to configure your correspondence, upload and test your file, and review the communication prior to sending to students.



Learn more at attigo.com